



**QNV**  
CONSTRUCTIONS

## Airlie



203.34 sqm / Alpine

### Lot \*\*

City / State / Post code

#### DIMENSIONS:

#### Area Calculations

Description	area (m2)
Garage:	35.79
Porch:	4.92
Alfresco:	11.04
House:	151.59
<b>Total:</b>	<b>203.34 m<sup>2</sup></b>

#### House Dimensions

##### Description:

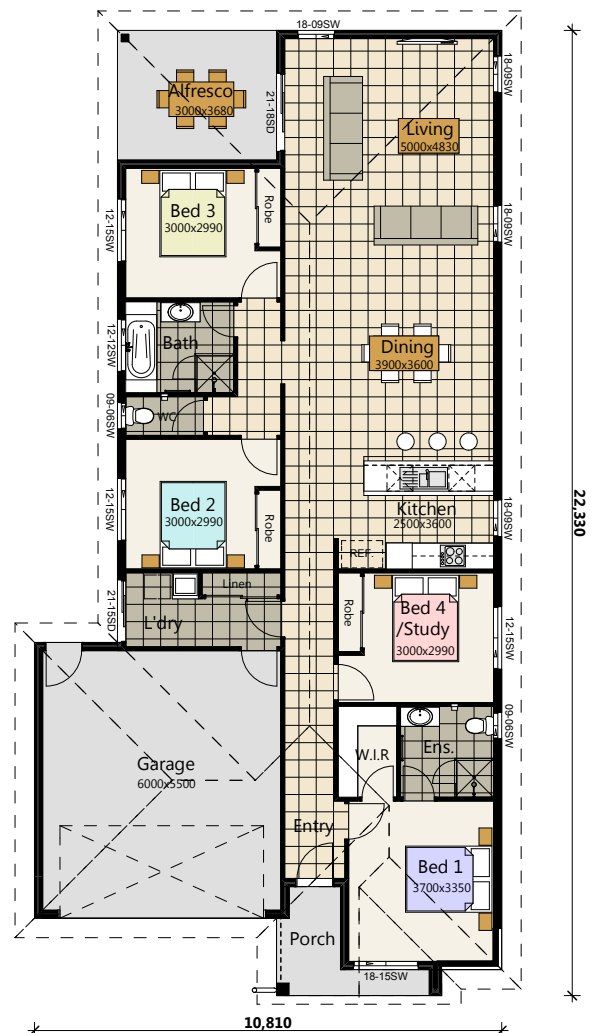
House Length:	22.330m
House Width:	10.810m

##### Measurement:

To be used as a guide only. Final setbacks are subject to site conditions, council and covenant requirements

##### Note:

This document does not form part of the contract. Plans override the source image as these are an artist impression only.



Disclaimer: Photographs & illustrations are intended to be a visual aid only. QNV Constructions gives no warranty and makes no representation to the accuracy of sufficiency of any description, illustrations, photographs or statements contained in this brochure and accepts no liability for any loss suffered by any person who relies wholly or partly upon the information presented. All information is subject to change without notice © Copyright 2012

[qnv.com.au](http://qnv.com.au)



**QNV**  
CONSTRUCTIONS

**Airlie**



201.05 sqm / Classic 1

**Lot \*\***

City / State / Post code

**DIMENSIONS:**

**Area Calculations**

Description	area (m2)
Garage:	35.79
Porch:	2.63
Alfresco:	11.04
House:	151.59
<b>Total:</b>	<b>201.05 m<sup>2</sup></b>

**House Dimensions**

**Description:**

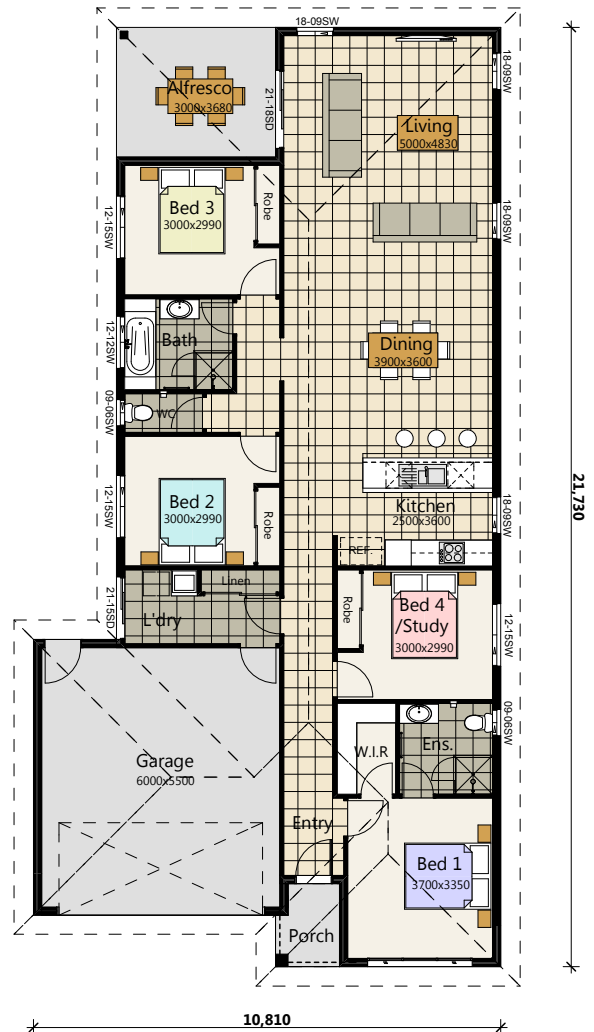
**Measurement:**

House Length:	21.730m
House Width:	10.810m

To be used as a guide only. Final setbacks are subject to site conditions, council and covenant requirements

**Note:**

This document does not form part of the contract. Plans override the source image as these are an artist impression only.



**Disclaimer:** Photographs & illustrations are intended to be a visual aid only. QNV Constructions gives no warranty and makes no representation to the accuracy of sufficiency of any description, illustrations, photographs or statements contained in this brochure and accepts no liability for any loss suffered by any person who relies wholly or partly upon the information presented. All information is subject to change without notice © Copyright 2012

[qnv.com.au](http://qnv.com.au)



**QNV**  
CONSTRUCTIONS

**Airlie**



203.76 sqm / Laguna

**Lot \*\***

City / State / Post code

**DIMENSIONS:**

**Area Calculations**

Description	area (m2)
Garage:	35.79
Porch:	5.34
Alfresco:	11.04
House:	151.59
<b>Total:</b>	<b>203.76 m<sup>2</sup></b>

**House Dimensions**

**Description:**

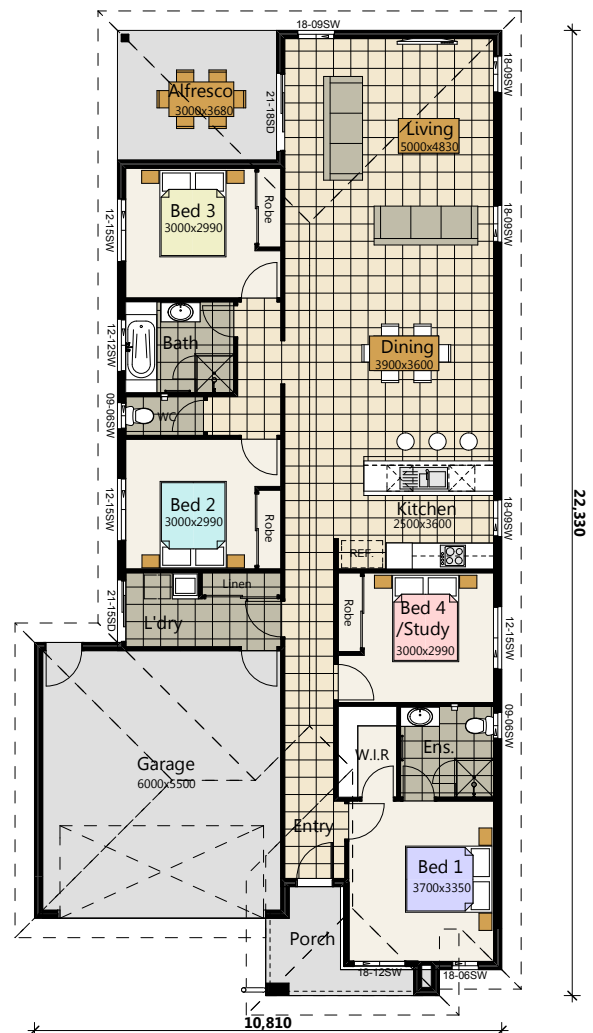
**Measurement:**

House Length:	22.330m
House Width:	10.810m

To be used as a guide only. Final setbacks are subject to site conditions, council and covenant requirements

**Note:**

This document does not form part of the contract. Plans override the source image as these are an artist impression only.



**Disclaimer:** Photographs & illustrations are intended to be a visual aid only. QNV Constructions gives no warranty and makes no representation to the accuracy of sufficiency of any description, illustrations, photographs or statements contained in this brochure and accepts no liability for any loss suffered by any person who relies wholly or partly upon the information presented. All information is subject to change without notice © Copyright 2012

[qnv.com.au](http://qnv.com.au)



**QNV**  
CONSTRUCTIONS

**Airlie**



204.93 sqm / Provincial

**Lot \*\***  
City / State / Post code

**DIMENSIONS:**  
**Area Calculations**

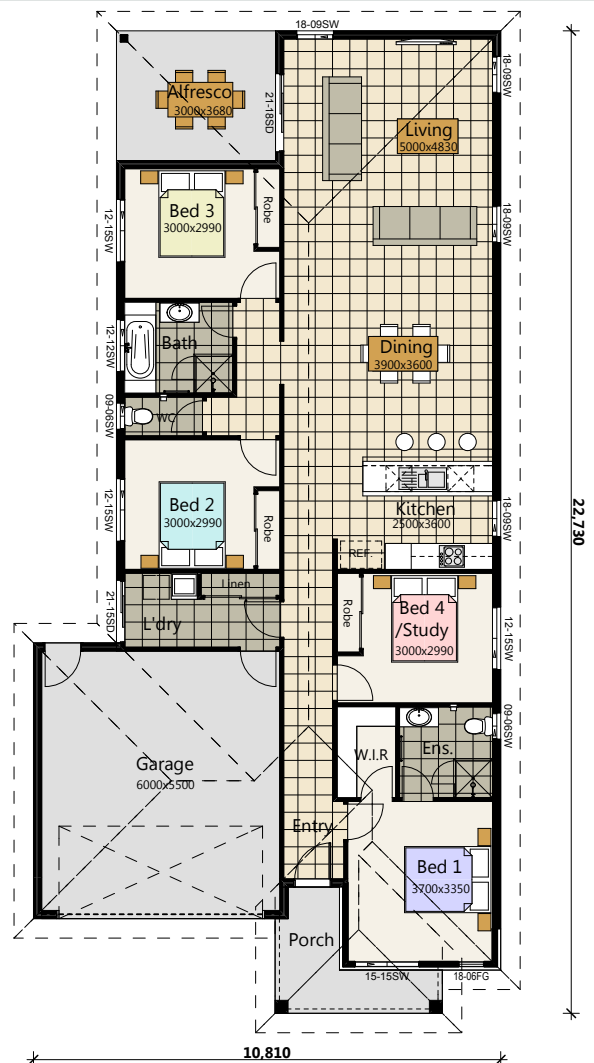
Description	area (m2)
Garage:	35.79
Porch:	6.51
Alfresco:	11.04
House:	151.59
<b>Total:</b>	<b>204.93 m<sup>2</sup></b>

**House Dimensions**

Description:	Measurement:
House Length:	22.730m
House Width:	10.810m

To be used as a guide only. Final setbacks are subject to site conditions, council and covenant requirements

Note:  
This document does not form part of the contract. Plans override the source image as these are an artist impression only.



Disclaimer: Photographs & illustrations are intended to be a visual aid only. QNV Constructions gives no warranty and makes no representation to the accuracy of sufficiency of any description, illustrations, photographs or statements contained in this brochure and accepts no liability for any loss suffered by any person who relies wholly or partly upon the information presented. All information is subject to change without notice © Copyright 2012

[qnv.com.au](http://qnv.com.au)